

notes :

1. If this drawing has been received electronically it is the recipient's responsibility to print the document to the correct scale.
2. All dimensions are in millimetres unless stated otherwise. It is recommended that information is not scaled off this drawing.
3. This drawing should be read in conjunction with all other relevant drawings and specifications.
4. Information based on drawing reference: OH8013-0202/62G105.

Key:

- A. Horizontally laid Sinusoidal profile insulated built-up cladding with Colorcoat HPS200® Ultra coating - Colour 'Terracotta' (matt finish) / RAL 040 40 40
- B. Vertically laid Flat profile insulated cladding panel with Colorcoat HPS200® Ultra coating - Colour 'Albatross' / RAL 240 80 05
- C. Horizontally laid Flat profile insulated cladding panel with Colorcoat HPS200® Ultra coating, 1000mm deep bands - Colours random mixture 'Terracotta (matt finish) RAL 040 40 40/ Merlin Grey RAL 180 40 05/ Anthracite (matt finish) RAL 7016/ Hamlet RAL 9002
- D. Vertically laid Trapezoidal profile insulated cladding panel with Colorcoat HPS200® Ultra coating - Colour 'Anthracite' (matt finish) / RAL 7016
- E. Stack - Colour 'Light Grey' / RAL 7035
- F. Horizontally laid Flat profile cladding sheet with Colorcoat HPS200® Ultra coating, 1000mm deep bands - Colours random mixture 'Terracotta (matt finish) RAL 040 40 40/ Merlin Grey RAL 180 40 05/ Anthracite (matt finish) RAL 7016/ Hamlet RAL 9002

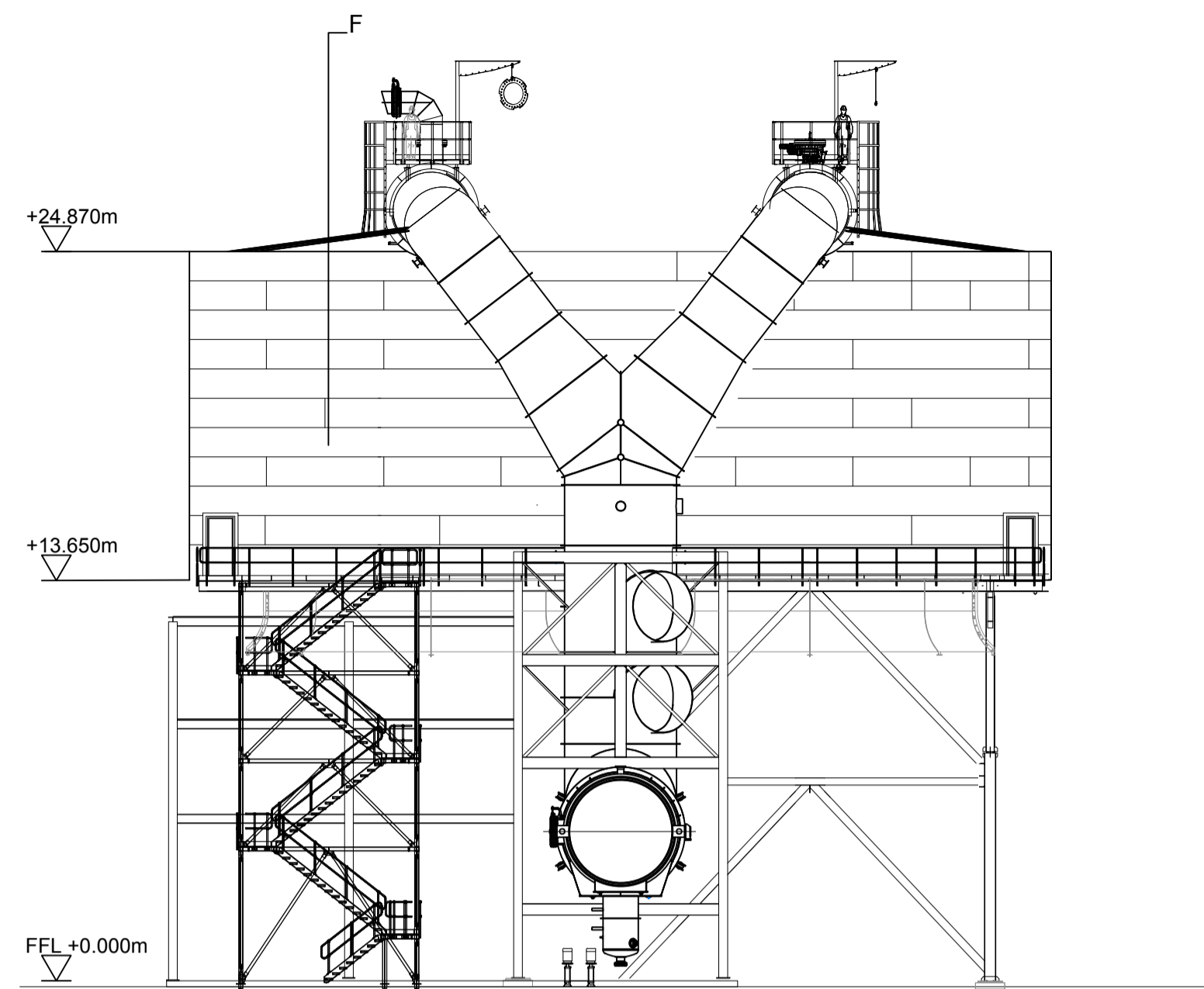
All **Doors** and **Louvers**- colour and dimensions to be confirmed

Polyester powder coated aluminium **window frames** - Colour 'Anthracite' (matt finish) / RAL 7016

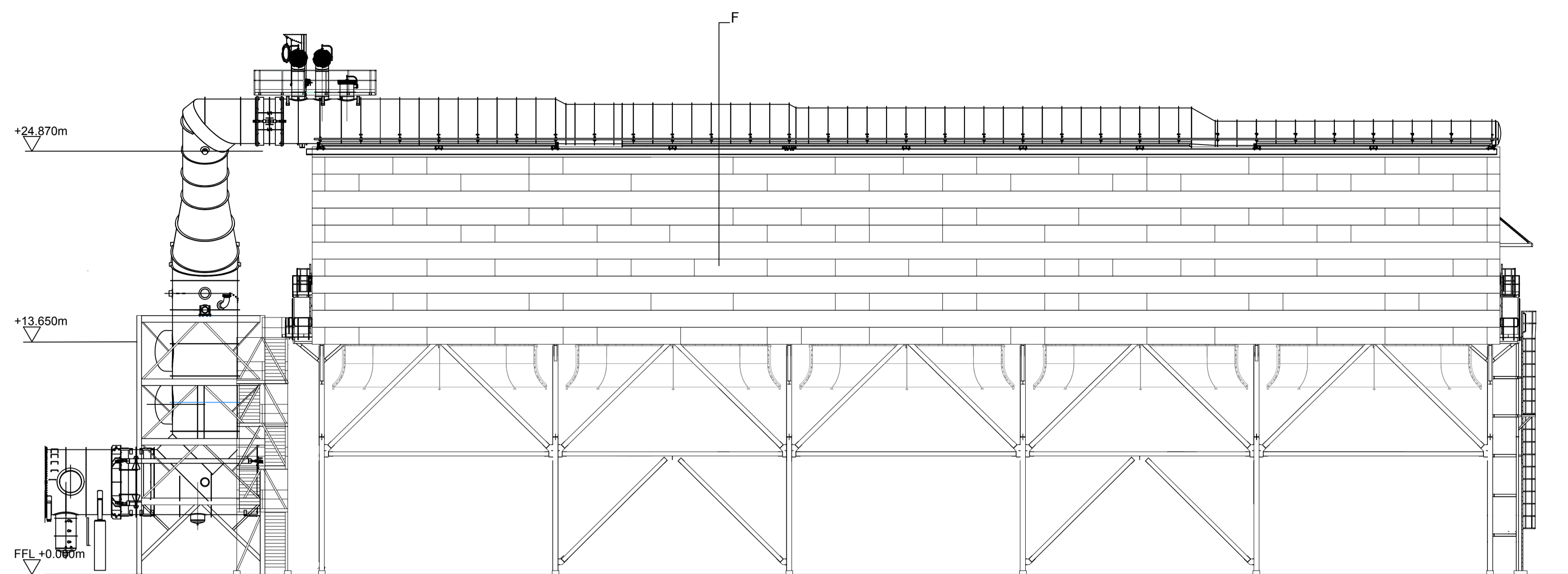
Metal **external handrails** and **plant support** - Galvanised finish.

Paladin fencing and gates - Colour 'Anthracite' (matt finish) / RAL 7016

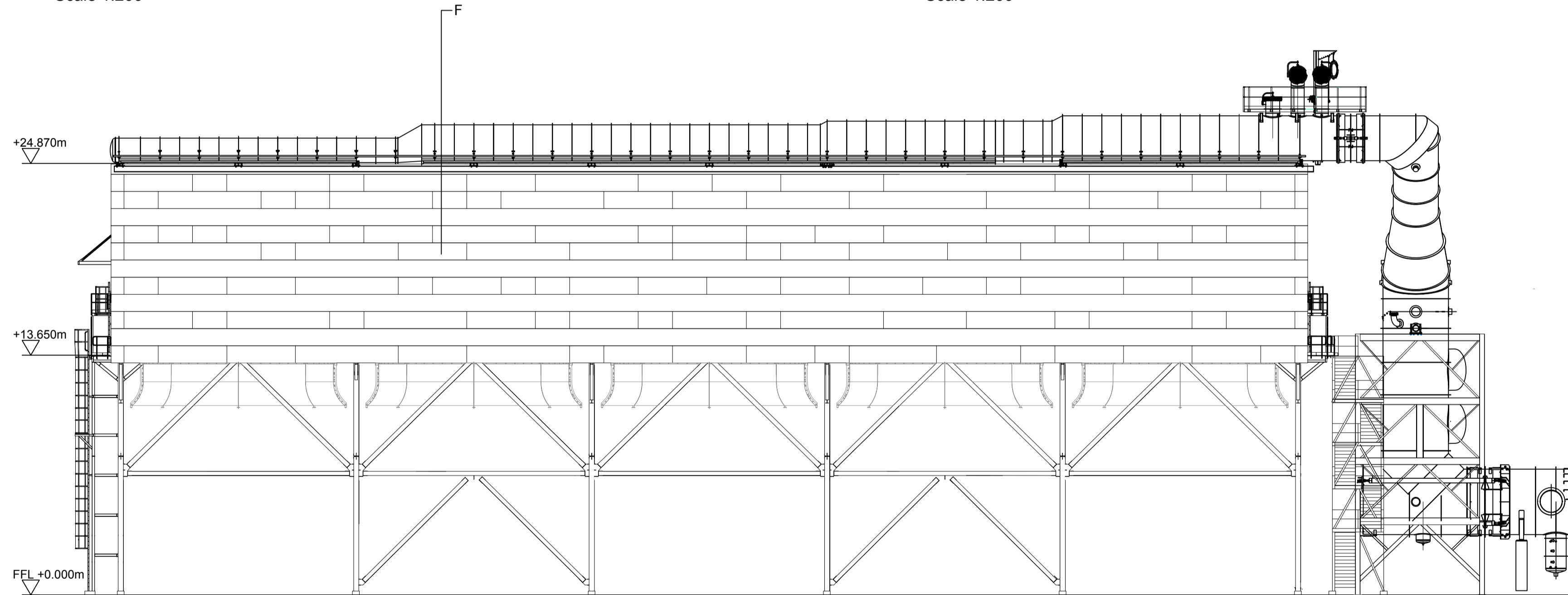
Drawing for **PLANNING** purposes only



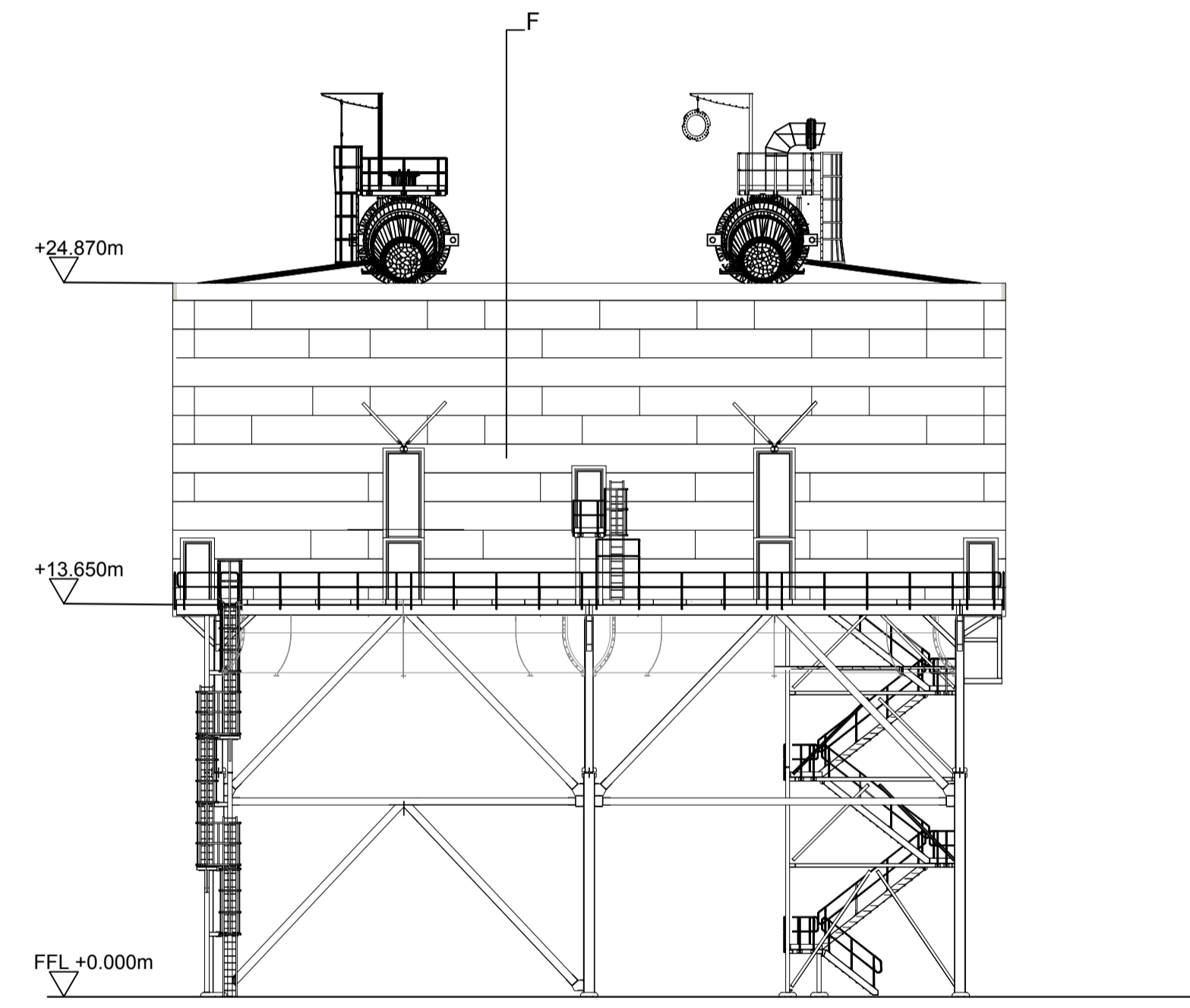
North East Elevation  
Scale 1:200



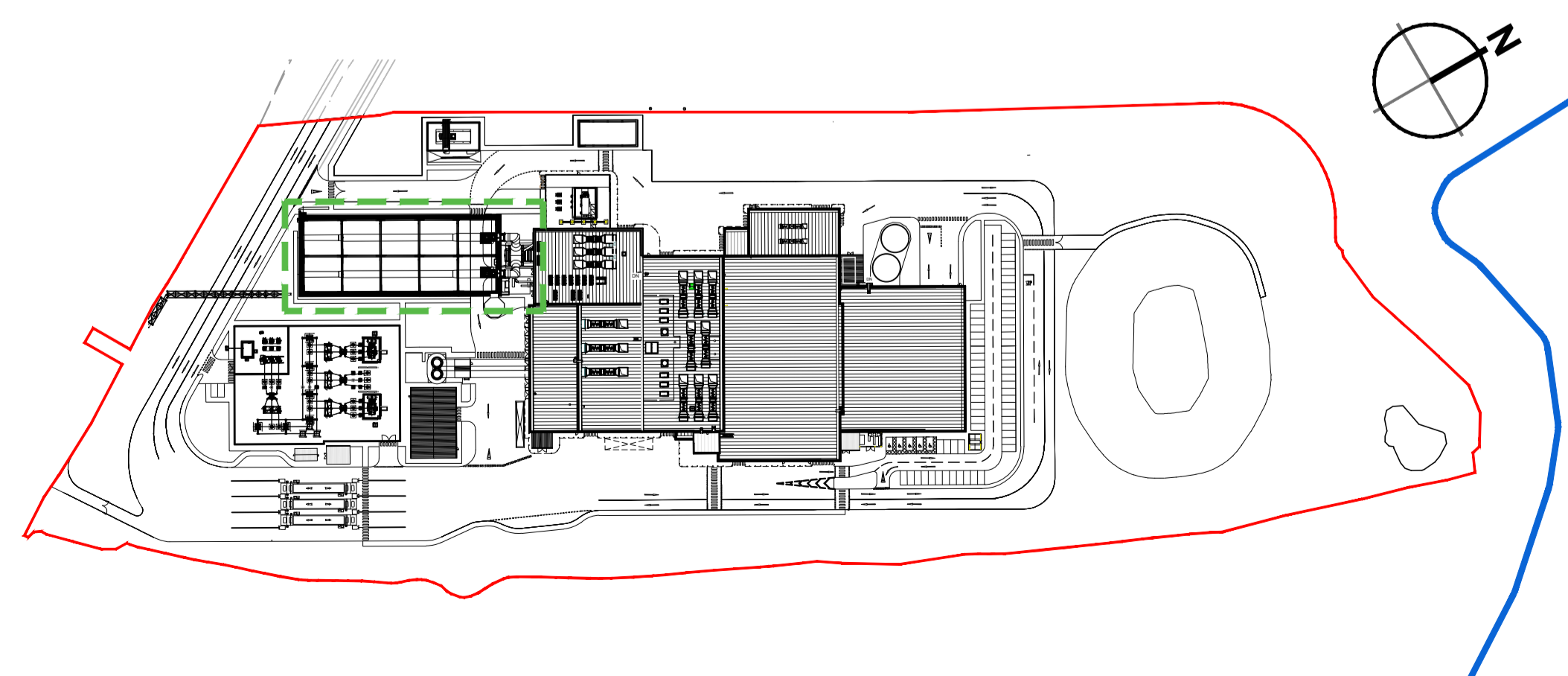
North West Elevation  
Scale 1:200



South East Elevation  
Scale 1:200



South West Elevation  
Scale 1:200



Location Plan  
Scale 1:2000

rev	amendments	by	ckd	date
N	Site plan updated	BC	TFH	30.08.18
M	ACC Revised to show access ladders to SW elevation, Site plan updated	PBR	TFH	19.06.18
L	ACC cladding amended.	CB	CMGD	28.02.17
K	Client logos updated. Key updated. Location Plan updated.	JT	CMGD	14.02.17
J	Updated to show and suit NMA 2016 design.	JH	CD	09.01.17
H	Updated to suit current site layout received from EPC contractor	AE	JAT	17.11.15
G	Updated as per clients comments 28.10.15.	MK	JAT	27.10.15
F	Updated to suit current building layout received from EPC contractor.	MK	JAT	20.10.15
E	Client logos updated. URC scale confirmed. Keyplan layout updated.	A.JL	RS	08.07.13
D	Elevations amended to suit comments.	JAT	SG	15.10.12
C	Elevation information and key updated.	JAT	SG	08.10.12
B	E.ON logo added.	KRY	PRP	15.02.10
A	Support structure rationalised. Cladding amended to reflect non-insulated cladding sheet.	AL	PRP	15.01.10



Sherwood House  
Sherwood Avenue  
Newark, Nottinghamshire  
NG24 1GQ

T +44 (0) 1636 605 700  
F +44 (0) 1636 610 696  
W [www.rpsgroup.com](http://www.rpsgroup.com)  
E [rpsnewark@rpsgroup.com](mailto:rpsnewark@rpsgroup.com)



Project **Kemsley Sustainable Energy Plant**

Title **Proposed Structure for Air Cooled Condenser Elevations**

Drawing Status <b>Preliminary</b>	Date Created 23.11.09	Drawing Scale 1:200
Project Leader AWY	Drawn By PRP	Initial Review RS

Drawing Number  
**16315/A1/P/0121 N**

**FIGURE 4.13D**

